

Procedure for remapping Bridge key

Step 1

Open the MacroWorks software by clicking its icon in the taskbar (Fig. 1)



Fig. 1

Step 2

Click the “Bridge” button (Fig. 2)

Step 3

When the editing window comes up, hit the “Clear” button, then select “Insert” and “Select File” from the menu.

Step 4

Navigate to (and select) the CS3 Bridge application in your Program Files folder. Then hit “OK”.

Step 5

Select “File>Save” in the main MacroWorks window and then close.

That’s it!

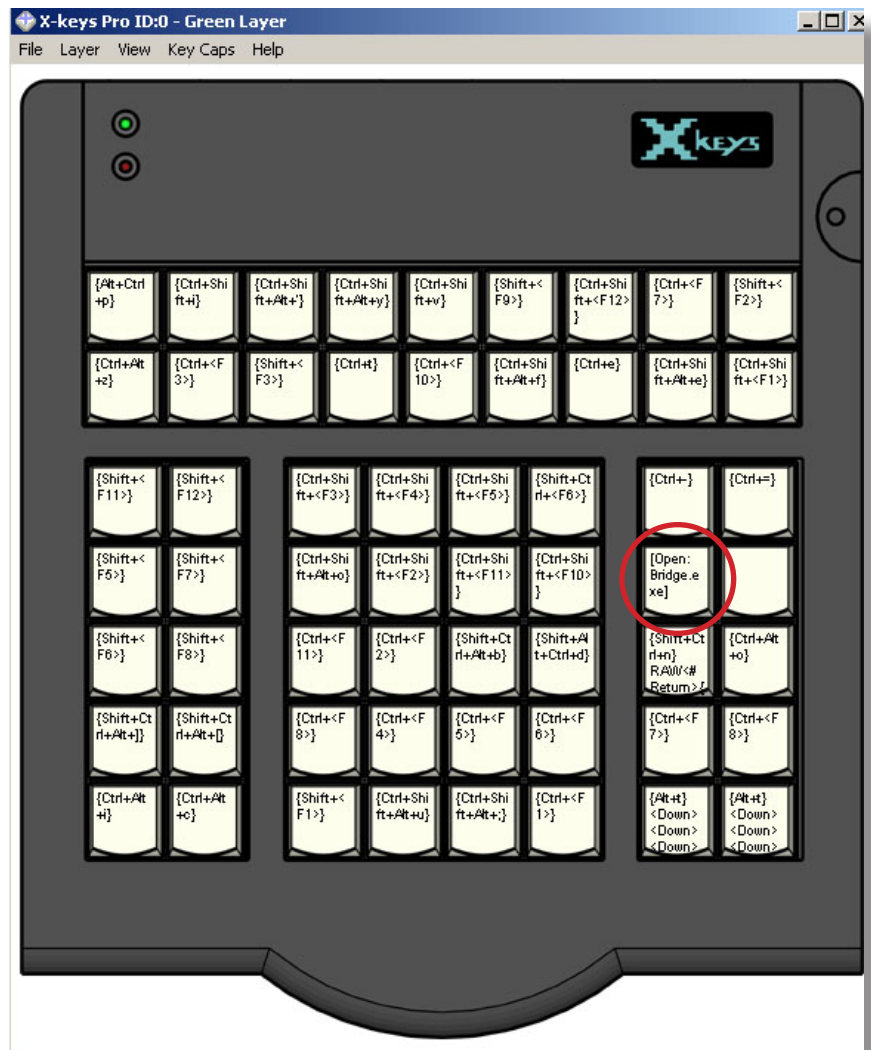


Fig. 2